



# SÜRDÜRÜLEBİLİRLİK EL KİTABI

## SUSTAINABILITY MANUAL

JUNE 2025

# REPUBLIC OF TURKIYE



## **FOUNDATION OF THE REPUBLIC OF Türkiye**

After the National War of Independence, which started on May 19, 1919, the First Grand National Assembly of Turkey convened on April 23, 1920, under the leadership of Mustafa Kemal Atatürk.

With the adoption of the first constitution on January 20, 1921, "Sovereignty belongs to the nation unconditionally. "Executive and legislative authority is concentrated in the Turkish Grand National Assembly on behalf of the Turkish nation."

On the first anniversary of the opening of the Turkish Grand National Assembly on April 23, 1921, April 23 was declared a national holiday with Law No. 112.

The Republic was declared on October 29, 1923.

# MUSTAFA KEMAL ATATÜRK

(1881-1938)



## **ATATÜRK, FOUNDER AND FIRST PRESIDENT OF THE REPUBLIC OF TURKIYE**

He was born in Thessaloniki in 1881. His mother is Zübeyde Hanım and his father is Ali Rıza Efendi. He went to the Mahalle School, Şemsi Efendi School, Thessaloniki Civil Junior High School, Thessaloniki Military Junior High School, Thessaloniki Military High School, the Military Academy and the Military Academy, respectively. While he was studying at the Military Middle School in 1893, "Kemal" was added to his name by his mathematics teacher and he took the name Mustafa Kemal. When the Ottoman Empire was defeated in World War I, the Armistice of Mudros was signed. Following the start of the occupation of the homeland in accordance with this agreement, Mustafa Kemal went to Samsun on May 19, 1919 and started the national struggle. Mustafa Kemal was elected as the President of the Parliament and Government with the opening of the Turkish Grand National Assembly on 23 April 1920. After winning the Battle of Sakarya, he was honored with the title of Gazi and the rank of Marshal. Mustafa Kemal became the first President of the Republic of Turkey with the proclamation of the republic on October 29, 1923.



# CLUB WASA HOLIDAY VILLAGE



## CLUB WASA HOLIDAY VILLAGE

Our hotel, located in the Alanya district of Antalya, is right on the seafront. Our hotel, located in the modern touristic district of the Mediterranean, Alanya Konaklı tourism center, was built on an area of 9000 m2. We offer an unforgettable dream holiday by leaving our guests alone with pine and palm trees and magnificent nature.

**Mission:** The satisfaction of our guests is our greatest asset. By investing in people, we work within the framework of a perfect guest-oriented service approach and provide services in line with the demands and expectations of our guests.

**Vision:** Under the roof of «CLUB WASA HOLIDAY VILLAGE», it is an institution that has become a brand in the region where Alanya merges with nature in the most beautiful way, has made a name for itself in its country and the world by becoming the first in these areas, where innovations, creative thoughts and ideas provide maximum guest satisfaction and gradually increases its quality in line with international standards.



# WASA HOTEL



## WASA HOTEL

Wasa Hotel has been providing superior service and hospitality for many years. Wasa Hotel is located in Alanya city center. This friendly hotel, which is a 5-minute walk from Cleopatra Beach, is 4 km away from the medieval Alanya Castle walls. It is 43 km away from Gazipaşa–Alanya Airport.

**Mission:** Our guests' satisfaction is our greatest asset. By investing in people, we work within the framework of a perfect guest-oriented service approach and provide services in line with the demands and expectations of our guests.

**Vision:** Under the roof of «WASA HOTEL», we are an institution that has become a brand in the region where Alanya merges with nature in the most beautiful way, and has made a name for itself in its country and the world by becoming the first in these areas, where innovations, creative thoughts and ideas provide maximum guest satisfaction and gradually increase its quality in line with international standards.

# MUZ HOTEL



## MUZ HOTEL

Muz Hotel, which is 2 km away from Alanya city center, is located on Cleopatra Beach. Muz Hotel, which has the fresh view and smell of the Mediterranean, is located in Dinek, Alanya, far from the noise of the city but with easy access to all areas. Alanya Cleopatra Beach is a beach hotel right on the seafront at the entrance of Alanya city center, 125 km from Antalya airport, 2 km from the city center and 800 m from the bus station.

**Mission:** Our guests' satisfaction is our greatest asset. By investing in people, we work within the framework of a perfect guest-oriented service approach and provide services in line with the demands and expectations of our guests.

**Vision:** Under the roof of «MUZ HOTEL», we are an institution that has become a brand in the region where Alanya merges with nature in the most beautiful way, and has made a name for itself in its country and the world by becoming the first in these areas, where innovations, creative thoughts and ideas provide maximum guest satisfaction and gradually increase its quality in line with international standards.



# CLUB WASA HOLIDAY VILLAGE

## OUR QUALITY, ENVIRONMENT AND FOOD SAFETY POLICY

Club Wasa Holiday Village aims to be one of the first preferred hotels in its region with its continuous in-service training and the different perspective it brings to hotel management. While achieving our goal, our first priority is to take environmental issues into account, reduce negative impacts on the environment, and raise environmental awareness by using resources carefully. In line with these objectives, our guest-oriented service approach, which we have created by constantly improving our processes and systems according to the requirements of the age, with the leadership and responsibility of the top management, with the voluntary participation of all our employees, has become established as a philosophy.

As a result, we based all our activities on the following principles;

- To be responsible for quality together with all our managers and employees
- Working in compliance with legal and regulatory requirements- Continuously monitoring our control points that we have determined to realize safe food production.
- Relying on the support and productivity of our employees
- To ensure access to contemporary quality values and customer satisfaction at every level of service provided
- Acting according to the principle of "continuous improvement" in all work carried out- Increasing our skills and quality awareness through training
- To increase family awareness by considering the happiness of our employees- Organizing environmental activities, participating in activities, and inviting our guests to our work.
- Evaluating the performance of our suppliers and communicating with them in order to ensure the continuity of our product quality.
- To respect and support society and the environment for Sustainable Tourism.

**General Manager**

# CLUB WASA HOLIDAY VILLAGE

## CHILD RIGHTS POLICY

- As the Club Wasa Holiday Village family, with the awareness and responsibility of being a well-established organization in tourism, to accept all our customers, including children, as guests, to adopt the principle of providing services by blending national and international values, fully fulfilling the requirements of human rights and children's rights,
- To act in accordance with the fact that the benefit of children is more important and prioritized than any other benefit, and to carry out continuous improvement studies in order to ensure the continuity of the system,
- To accept that all children are entitled individuals,
  - - The right to life and development
  - - The rights to protection
  - - Participation rights
  - - The right to prevent discrimination
- To act together with all stakeholder institutions and organizations, as well as non-governmental organizations and local governments, at the point of implementation of this policy, so that it is adopted and lived in all areas of life,
- For this reason, giving importance to education and continuous development in order to ensure that all our personnel are informed about children's rights,
- We undertake to take the necessary legal and administrative measures, to improve all necessary conditions and to ensure that children participate more effectively and happily in life within the framework of the Social State understanding included in the UN Convention on the Rights of the Child and our Constitution.

**General Manager**



# MAP

From our hotel

- Cable car 12 km
- Damlataş Cave 12 km
- Alanya Red Tower 13 km
- Alanya Castle 15 km
- Dim Stream 27 km
- Sapadere Canyon 57 km
- Manavgat Waterfall 52 km
- Side Ancient City 53 km
- Aspendos Ancient Theater 82 km
- Antalya Castle 125 km

# ALANYA CABLE CAR



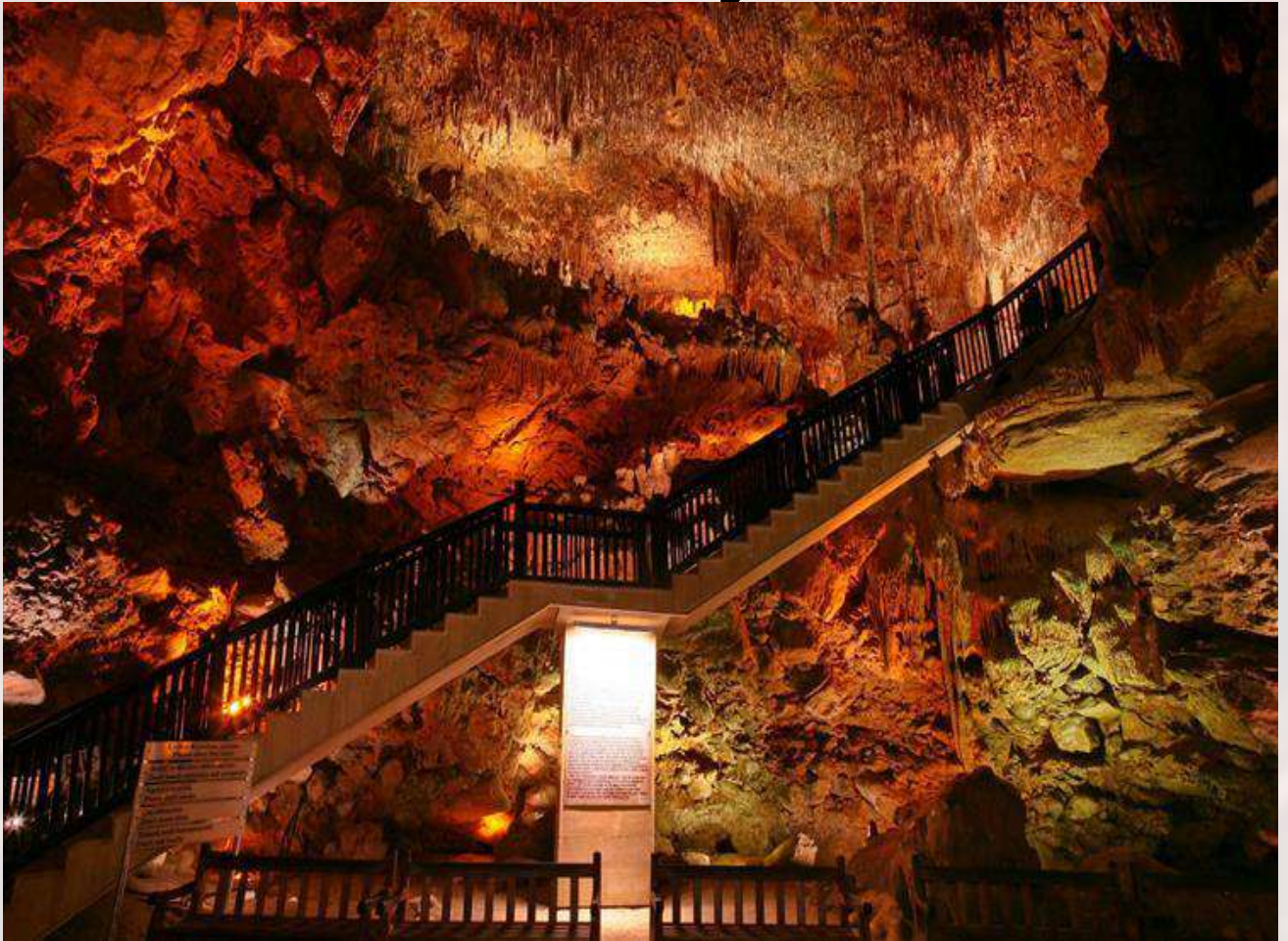
## **ECOLOGICAL TRANSPORTATION**

Alanya Cable Car offers "ecologically sensitive transportation" with its technology elegantly placed in nature. Great care is taken to protect the environment and consume natural resources economically at every stage of construction and operation. It contains all the advantages of ecological transportation vehicles. Designed to operate in all weather conditions, the Alanya Cable Car system can continue to operate uninterruptedly in conditions such as rain, wind and high temperature.

Transportation is provided by taking Alanya minibuses from the stops on the main street in front of our hotel.



# DAMLATAŞ CAVE



## DAMLATAŞ CAVE

Damlataş Cave was found in 1948 during a quarry for stone to be used in the construction of the port. The cave is on the west coast of the historical peninsula. The stalactites and stalagmites of the cave, located in semi-crystallized limestone, were formed over 15 thousand years. The cave was named "Damlataş" because of the drops of water that continue to drip from the stalactites. Damlataş Cave, a favorite of local and foreign tourists, is famous for its enchanting beauty as well as its air that is good for asthma patients. The weather of the cave does not change in summer or winter; temperature is 22 degrees Celsius, humidity is 95 percent, constant pressure is 760 mm. The air of the cave contains 71 percent nitrogen, 20.5 percent oxygen, 2.5 parts per ten thousand carbon dioxide and some radioactivity and ions. Entrance to the cave is paid. There is a small market around it and the beach in front of it.

Transportation is provided by taking Alanya minibuses from the stops on the main street in front of our hotel.



# ALANYA RED TOWER



## **ALANYA RED TOWER**

Red Tower, a unique example of 13th century medieval Mediterranean defense structures; It was built by the construction master Ebu Ali Reha el Kettani from Aleppo by the Seljuk ruler Alaaddin Keykubat I in order to protect the port, shipyard and Alanya Castle against attacks from the sea. There is a four-line construction inscription on the outer northern wall of the building, written in the name of Alaaddin Keykubat, 10 meters above the ground, stating "gratitude to God" and the date of construction as April 1226, and another construction inscription on the southern wall. Red Tower, which has an octagonal plan, has a complex plan inside, contrary to its simple exterior. Red Tower; It has five floors: ground floor, first floor, mezzanine floor, open floor and open terrace.

Transportation is provided by taking Alanya minibuses from the stops on the main street in front of our hotel.

# ALANYA CASTLE



**Alanya Castle** is a castle that is one of the symbols of Alanya, the district of Antalya. It is located on a peninsula rising approximately 250 meters above the sea. The total length of its walls is 6.5 kilometers. The castle was built in the Alanya settlement, which was called Kandeleri in ancient times, during the Hellenistic period. The history of the castle, whose current historical fabric is a 13th-century Seljuk work, dates back to the Hellenistic period. The castle was built by the Seljuk Sultan Alaeddin Keykubat I, who took the city and rebuilt it in 1221.

Transportation is provided by taking Alanya minibuses from the stops on the main street in front of our hotel.



# DİM STREAM



## DİM STREAM

The river originating from the Taurus Mountains follows a course of approximately 60 kilometers. Its water is cold in summer and winter, making it an ideal place for those who want to escape the sweltering heat of the Mediterranean, especially in summer. There are many restaurants and tea gardens opening parallel to the road. These restaurants continue after the regulator, which is approximately 7-8 kilometers away from the main road. A common feature of the restaurants and picnic areas here is the tables thrown into the river. The upper parts of the river are used for rafting purposes.

Transportation is provided by taking Alanya minibuses from the stops on the main street in front of our hotel. Transportation is provided by getting off at the last stop and taking the buses that say Dimçayı.



# SAPADERE CANYON



Located between the fierce Taurus Mountains, the canyon is surrounded by high mountains on three sides and is 750 meters long. Located 400 meters above sea level, the canyon is surrounded by karst rocks with an average width of 10-15 meters and a circumference of 150-200 meters. Since its water comes from the rocks of the Taurus Mountains, it is cold and has plenty of oxygen.

The canyon, which was opened in 2008, was built on steel construction with wooden platform walking paths for easy navigation, and some areas were protected with wire for security. The walk, which starts with a slight incline from the entrance of the canyon, becomes more enjoyable with 10-15 degree ramps from time to time.

Transportation is provided by taking Alanya minibuses from the stops on the main street in front of our hotel. Continue by taxi. Public transportation does not go to this area.

# SİDE ANCIENT CITY



The ancient city of Side is one of the most important settlements in history, founded in the 7th century BC. This historical city, which belongs to the Pamphylia region, was the first empire of the Lydian Kingdom and remained under this reign for many years. The ancient city of Side, which later transitioned to the Persian Kingdom, passed to the King of Macedonia when Alexander the Great requested the region.

You can get there by taking Manavgat buses from the stops on the main street in front of our hotel, and by taking Side minibuses from the city center.



# ASPENDOS ANCIENT THEATER



**Aspendos** is famous for having the best-preserved Roman Period theater not only in Anatolia but in the entire Mediterranean world. The city was founded on the hill plain near one of the largest rivers of the region, Köprüçay (Ancient Eurymedon). Today, theaters and waterways are mostly visited in Aspendos, which owes its transportation and development with the Mediterranean to the nearby river and therefore the fertile lands around it.

From the stops on the main street in front of our hotel, you can take Antalya buses to Serik and from there take minibuses to Aspendos.



# MANAVGAT WATERFALL



## **Manavgat Waterfall**

It is a waterfall located on the Manavgat River in the Manavgat district of Antalya. Although it pours from a low height, it flows over a wide area with a high flow rate.

You can take Antalya buses from the stops on the main street in front of our hotel and go to Manavgat.

# ANTALYA KALEİÇİ



Antalya Kaleiçi is protected by two thick horseshoe-shaped walls. One of these rampart-shaped walls is in the seaside bay, the other is on the land side. In addition to these walls, there are also walls separating the various settlements from each other, and there is a tower approximately every fifty steps on the outer walls. Narrow streets within the walls extend along the wall from the port upwards. Yivli Minaret, Keyhüsrev Madrasa, Karatay Madrasa, İskele Mosque, Tekeli Mahmut Pasha Mosque are just some of the important historical monuments within the city walls.

You can take Antalya buses from the stops on the main street in front of our hotel and reach the Castle by Antalya city buses.



# HADRIAN GATE



It is one of the best preserved historical buildings in Antalya. The building, which is a Roman work, was built in 130 AD in the name of Roman Emperor Hadrian. Over time, the city walls closed the outer part of the gate and the gate was not used for many years. Perhaps this is one of the reasons why the work has survived until today without being destroyed. The gate was unearthed after the ruins of the city walls were demolished. It is considered the most beautiful gate of Pamphylia. There are three dome-shaped openings at the top. It is made entirely of white marble, except for its columns. The carvings and relief decorations are very beautiful.

You can take Antalya buses from the stops on the main street in front of our hotel and reach the Castle by city buses.



# HOW TO GET THERE?

## **ALANYA HARBOUR – RED TOWER**

Take the Alanya buses that pass in front of our hotel and get off at the last stop. It is about a 15-minute walk away.

## **ALANYA CASTLE**

You can reach the castle by bus from Alanya city center or by cable car from Damlataş. You can also walk 1 hour from Alanya city center to the castle.

## **MANAVGAT - SIDE**

You can reach Manavgat and Side center in 1.5 hours by using public transportation passing through the main street in front of our hotel.

## **ANTALYA**

You can reach Antalya city center in 2.5 hours by using public transportation passing through the main street in front of our hotel.

## **AIRPORT**

Our hotel guests can reach Antalya airport in 2 hours with their own agency's transfer vehicles.

Our hotel guests can reach Gazipaşa airport in 60 minutes with their own agency's transfer vehicles.

## **ALANYUM**

You can use public transport from the stops next to our hotel, first get off in Alanya city center, then get on the bus again and reach Alanyum shopping center.

\*\*\* Public transportation in residential areas is provided by Supervised City Minibuses for a fee or by city cards on Municipal Buses.

\*\*\* If they wish, our guests can benefit from taxi services at the taxi stands located near our hotel.

# NEIGHBORHOOD MARKETS

## WEDNESDAY KONAKLI MARKET

A vegetable, fruit and textile market is set up approximately 2 km away from our hotel every Wednesday.



## ALANYA NEIGHBORHOOD MARKETS

You can get detailed information about other neighborhood markets in Alanya by scanning the QR code.



# CULTURAL INFORMATION



## **TURKISH TEA**

A type of black tea is produced in Turkey and grows along the Eastern Black Sea coast. This type of tea is also called "Turkish tea" among the public. It is brewed with powdered roasted black tea and served in unique small glasses known as "ince waist".

# CULTURAL INFORMATION



## **TURKISH COFFEE**

**Turkish coffee** is one of the oldest coffee preparation and cooking methods that has survived from the Ottoman Empire to the present day, which has an important place in Turkish culture. It has a unique identity and tradition with its unique taste, foam, smell and presentation style. It is the only type of coffee served with grounds.

As of 2013, Turkish coffee culture and tradition was recorded on the **UNESCO Representative List of the Intangible Cultural Heritage of Humanity** on behalf of our country.



# CULTURAL INFORMATION



## **AYRAN**

It is a type of drink obtained by adding water to yoghurt. It is one of the most common drinks belonging to Turkish cuisine.

Göktürks, who ruled between 552-745 AD, added water to yoghurt to reduce its sourness. Thus, ayran came into being by chance.

The word ayran was defined for the first time in history as "a drink obtained from milk" in the work Divan-ı Lügat-it Türk.

# CULTURAL INFORMATION



## **GÖZLEME**

"Gözleme" is a type of appetizer Turkish pastry prepared by filling thinly rolled dough with various filling ingredients and then baking it on a sheet metal over a wood fire.

"Közmen", which means bread cooked on embers during the Seljuk period, is one of the first expressions used to mean flatbread. Over time, due to the evolution of the spoken language and the changing local dialects, it has changed and taken the name gözleme.



# CULTURAL INFORMATION



## **TURKISH BATH**

There has been a bath culture in Anatolia since ancient times. Turks carried their bath traditions, which existed when they lived in Central Asia, to Anatolia, where they migrated. They placed their own traditions on the marble bath culture left by those who lived before them. Over time, baths became places where very special days were celebrated. For women, which continues even today, there are "bridal baths", "puerperal baths", "baby's forty baths", "votive baths", "mourning baths" and "groom's baths", "circumcision baths", "soldier baths" and "baths for men". Eid Hammam" continues to be up-to-date.



# CULTURAL INFORMATION



## HACIVAT KARAGÖZ

Karagöz and Hacivat is a shadow play performed on a screen with two-dimensional depictions, based on imitation and mutual conversation. Karagöz actor is called fictional, imaginary. Change the conversation in the game is done with head movements.

It is not known for certain whether these two characters actually lived or not, and if so, where and how they lived. What is told is based on rumors, because even if they really lived, they probably did not find it important enough to be included in the history books during the mentioned period.



# CULTURAL AND NATURAL HERITAGE



## CARETTA CARETTA

Caretta caretas, which never come to land except to lay eggs, are in the category of endangered creatures. Loggerhead sea turtle (Caretta caretta) and green sea turtle (Chelonia mydas) species lay eggs on the Mediterranean coast of Türkiye.

According to the results of studies carried out in the Mediterranean from past to present, the most important nesting areas of the Caretta caretta species are **Türkiye** and Greece.

# ENDEMIC ANIMAL SPECIES



**CARETTA CARETTA**  
*Caretta Caretta*



**ANATOLIAN PARS**  
*Pantera pardus tuttiana*



**ANATOLIAN MIFLOON**  
*Ovis orientalis anatolica*



**GELENGİ**  
*Citellus citellus*



**HOPA VIDER**  
*Vipera kaznakovi*



**STEP LYNX**  
*Felis caraca*



# CULTURAL AND NATURAL HERITAGE



## **SAND LILY (*Pancratium maritimum*)**

Sand lily is a perennial, bulbous plant species belonging to the Amaryllidaceae family and growing especially in Mediterranean dunes. Its homeland is the Mediterranean region. It is an endemic plant species. In our country, criminal sanctions are imposed on those who damage this plant.

Sand lilies are generally seen in areas a few meters away from the sea. It does not shed its leaves, which resemble long spears coming from the bottom and can reach 40 cm in length, in winter. Flowering time is between August and October.

# ENDEMIC PLANT SPECIES



**SAND LILY**

*Pancratium maritimum*



**TAURUS ORCHID**

*Himantoglossum Montis-tauri*



**BAYTOP CROCUS**

*Colchicum Baytopiorum*



**PHASELIS BURCAK**

*Lathyrus Phalitanus*



**SIDE MONSTER WEED**

*Orobanche Sideana*



**PERGE AIR MERCURY**

*Alkanra Macrophilla*



# **THINGS TO CONSIDER WHEN VISITING LOCAL, HISTORICAL, ARCHAEOLOGICAL, CULTURAL, SPIRITUAL PLACES**

**Please do not participate in tourist activities that involve animal abuse.**

**Please let's be environmentally conscious in travel areas.**

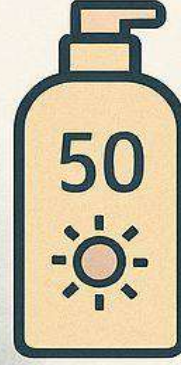
**In our country, cigarettes and alcoholic beverages are not sold to children under the age of 18.**

**In all areas except the beach, swimsuits are not allowed, clothes are worn.**

**Do not take photographs of children or touch children without permission from their families.**

**Before entering sacred areas such as mosques, shoes are removed and women cover their hair with a veil.**

# ÇEVREMİZ İÇİN



## Değerli Misafirlerimiz,

Kişisel bakımınız için kullandığınız sprej, deodorant, parfüm, güneş kremi, sinek kovucu ilaçlar ile ilgili seçimleinizde doğaya zarar vermeyen ürünlerin seçimi sürdürülebilir çevre için en güzel yatırımdır.

Bir güneş kremi şu bileşenlerden herhangi birini içeriyorsa, yerine deniz yaşamı için güvenli bir alternatifini arayın:

Oksibenzon-1, Benzofenon-8, OD-PABA, 4-Metilbenziliden Kamfor, 3-Benziliden Kamfor, Nano-Titanyum Dioksit, Nano-Çinko Oksit, Oktokrilin, Oktinoksat, Oktoksalat



# EXPERIENCE THE LOCAL CULTURE



## TURKISH FOOD NIGHT

All special flavors of Alanya are presented at the "Turkish Night" held once a week in our hotel and Turkish Culinary Culture is introduced to our guests.



# EXPERIENCE THE LOCAL CULTURE





**Club**  
**Wasa**  
**HOLIDAY VILLAGE**

**Wasa**  
**Hotel** \*\*\*  
*Alanya / Türkiye*

**HOTEL**  
**MUZ**  
**MUZ OTELCİLİK**

## ÇEVREMİZİ KORUMAK İÇİN To Protect Our Environment

**Daha Az Elektrik Tüketin!**

Çevresiz çalışan cihazları  
kapatın ve fişlerini çekin.



**Consume less electricity !**  
Turn off and unplug unnecessary working devices.

**Araştırın!**

Yediğiniz bir şeyceğin  
nerede ya da nasıl  
üretildiğini öğrenin.



**Research it!**  
Find out where and how a  
food you eat is produced.

**Aışkanlıklarınızı Değiştirin!**

Poşet yerine bez  
torba kullanın.



**Change your habits!**  
Use cloth bags instead of Plastic bags.

**Fark Edin!**

Sokak hayvanları için  
dışarıya bir kap su koyun.



**Notice them!**  
Put a bowl of water outside  
for street animals.

**Daha Az Su Tüketin!**

Dişlerinizi fırçalarken ve  
ellerinizi yıkarken suyu  
sürekli açık bırakmayın.



**Less water Consumption**  
Do not leave the water on all the time while brushing  
your teeth and washing your hands.

**Gözlemleyin!**

tek kullanımlık  
esyaıarı tespit edin ve  
onları daha az kullanın.



**Observe it!**  
your disposables and use them less.

**Club**  
**Wasa**  
**HOLIDAY VILLAGE**

**Wasa**  
**Hotel** \*\*\*  
*Alanya / Türkiye*

**HOTEL**  
**MUZ**  
**MUZ OTELCİLİK**

## ÇEVREMİZİ KORUMAK İÇİN To Protect Our Environment

### Yenileyin!

Kırılmış ya da bozulmuş eşyalarınızın yerine yenilerini almadan önce onları tamir etmeye çalışın.



### **Refresh it!**

Before you buy a new one for your broken or damaged items, try to fix them.

### Geri Dönüştürün!

Aşklarınızı uygun geri dönüşüm kutularına atın.



### **Recycle it!**

Dispose of your waste in appropriate recycling bins.

### Fidan Dikini!

Bir ağaç tohumunu çimletirdin ve büyüttüğün. Fidanı toprağa dikin.



### **Plant saplings !**

germinate a tree seed and plant the seedling you have grown into the ground.

### Kullanmayın!

Tek kullanımlık plastik pipetleri kullanmayın.



### **Do not use!**

Do not use disposable plastic straws.

### Doğaya Saygı Duyun!

Daha az kâğıt kullanın. Kâğıtların iki tarafını da kullanın.



### **Respect nature!**

use less paper. Use both sides of the paper.

### Paylaşın!

Kullanmadığınız giysileri giysi toplama kutularına bırakın ya da başkasıyla paylaşın.

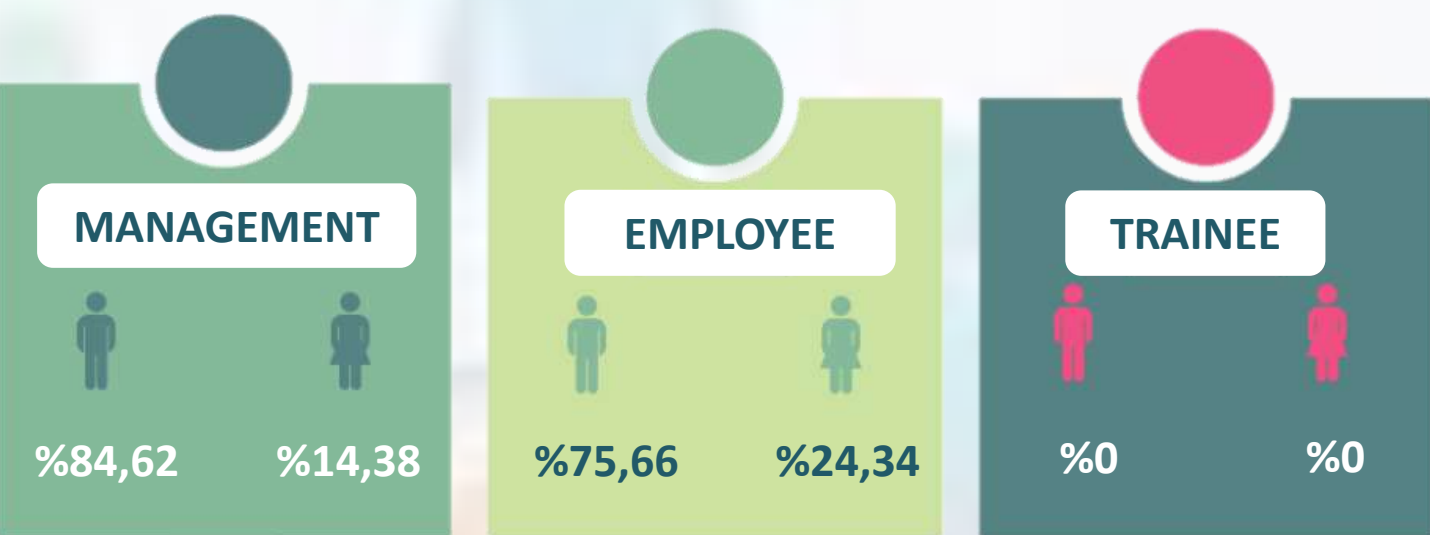


### **Share it!**

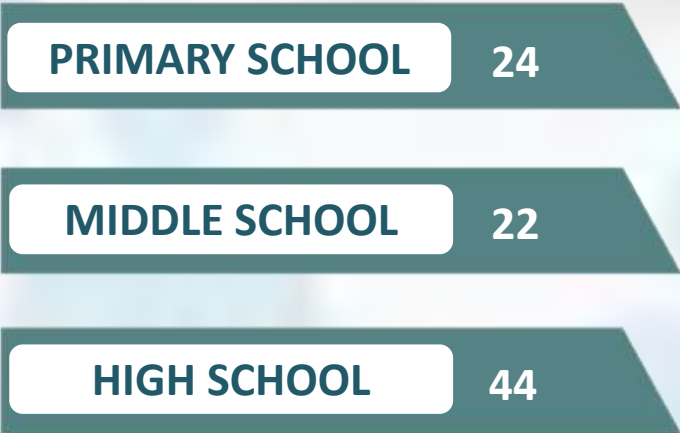
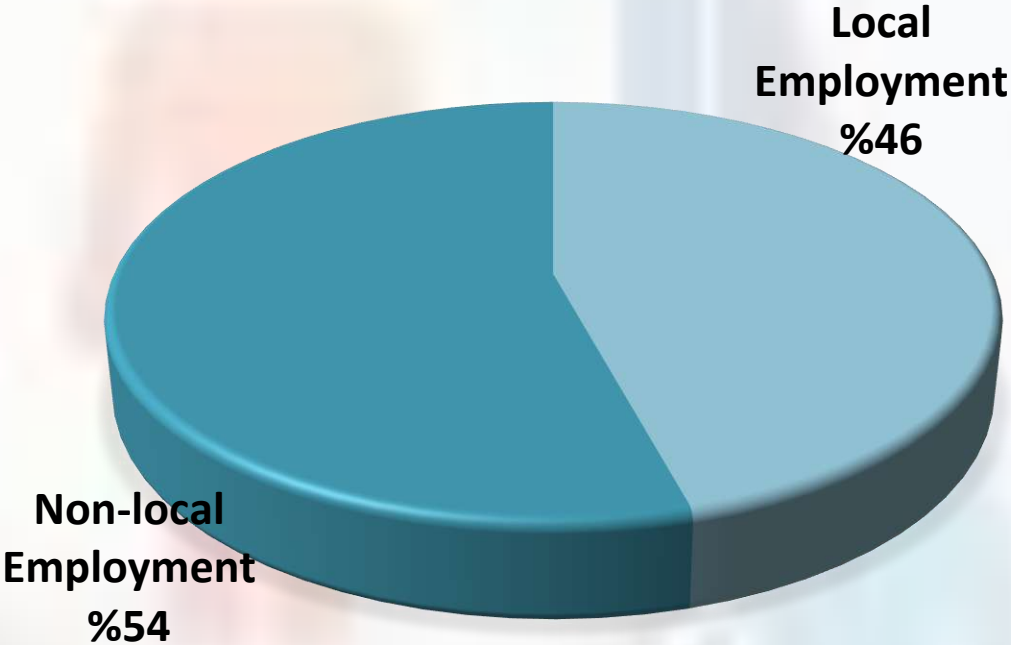
leave unused clothes in the clothes collection boxes or share them with others.



# HUMAN RESOURCES



## EMPLOYMENT RATES



# OPPORTUNITIES OFFERED TO STAFF



## **Lodging Opportunity:**

Lodging is allocated to our staff. There are facilities in the lodgings to meet their personal needs.

## **Personnel Service Opportunity:**

A shuttle service is provided to the hotel for our staff working in different shifts.



## **Health Service Opportunity:**

Our employees can receive health care from the doctor's office in our hotel during working hours.

## **Meal Opportunity:**

Meals are served for our staff in the staff cafeteria.



## **Laundry Facility:**

The uniforms of all our employees are washed in our hotel. Those staying in the lodge can use the washing machine in the lodge.



# ENERGY-SAVING



98% of our facility's lighting is made of LED lights. The goal is to have 100% LED lighting.

Electronic energy cards are used in all rooms.



We prefer highly energy efficient, environmentally friendly devices and technologies.

Motion-sensitive sensor illuminators are used in general areas and staff areas.



General areas are designed to take advantage of daylight for energy saving.

# ENERGY-SAVING



Exterior lighting is controlled by timers.

Minibars are positioned away from heat sources to save energy.



LED televisions are used in our rooms.



The use of air conditioning devices is reduced by keeping the curtains of empty rooms closed in summer and open in winter.



Energy losses are minimized by performing periodic maintenance and cleaning of all electronic devices.



# ENERGY-SAVING



We have 228 solar panels to benefit from solar energy. We provide 70% energy savings in the water heating system.

The tires of cold rooms, deep mills, and refrigerators are checked and worn out tires are replaced, preventing energy losses.



Dishwashers, washing machines and dryers should not be operated unless they are fully loaded.

Our energy consumption is recorded and monitored on a monthly and annual basis.



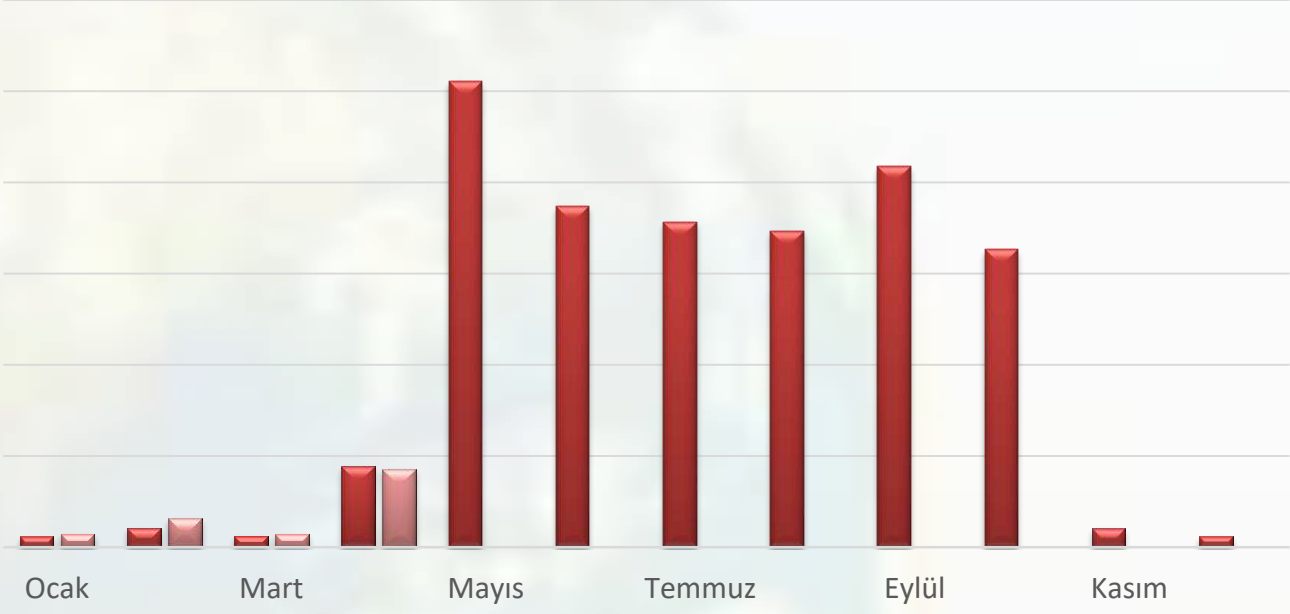
Our staff is given training on savings measures and our guests are informed about our savings practices.



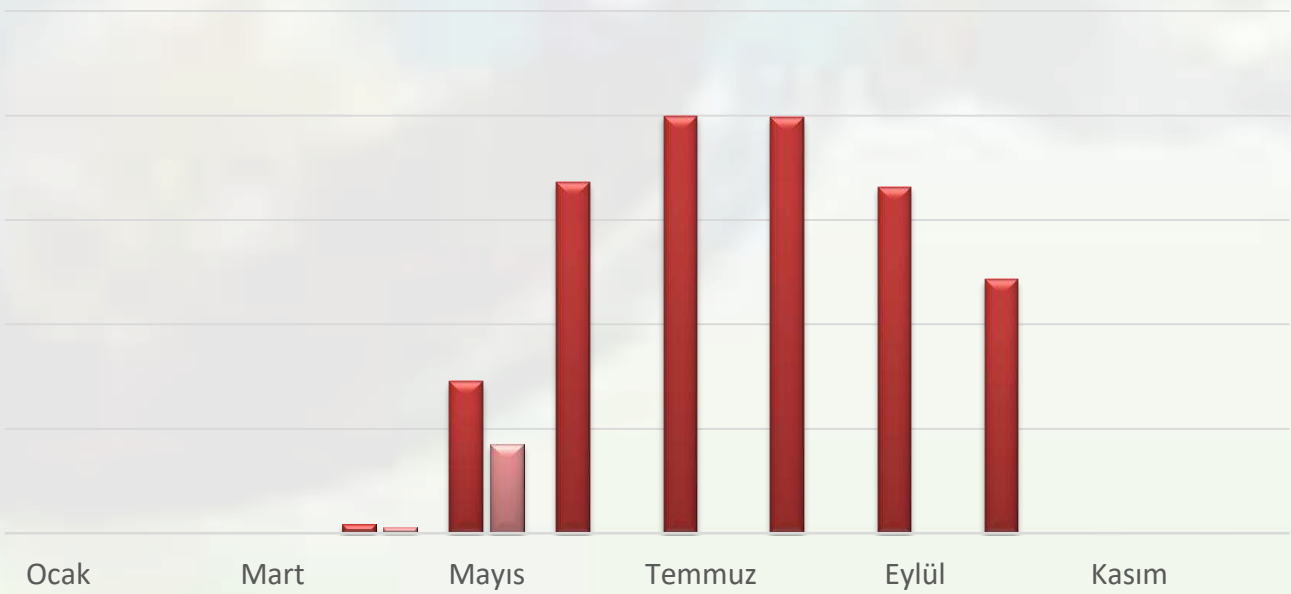
# CLUB WASA HOLIDAY VILLAGE

## ENERGY-SAVING

Electricity Consumption 2024-2025



Electricity Consumption Per Capita 2024-2025

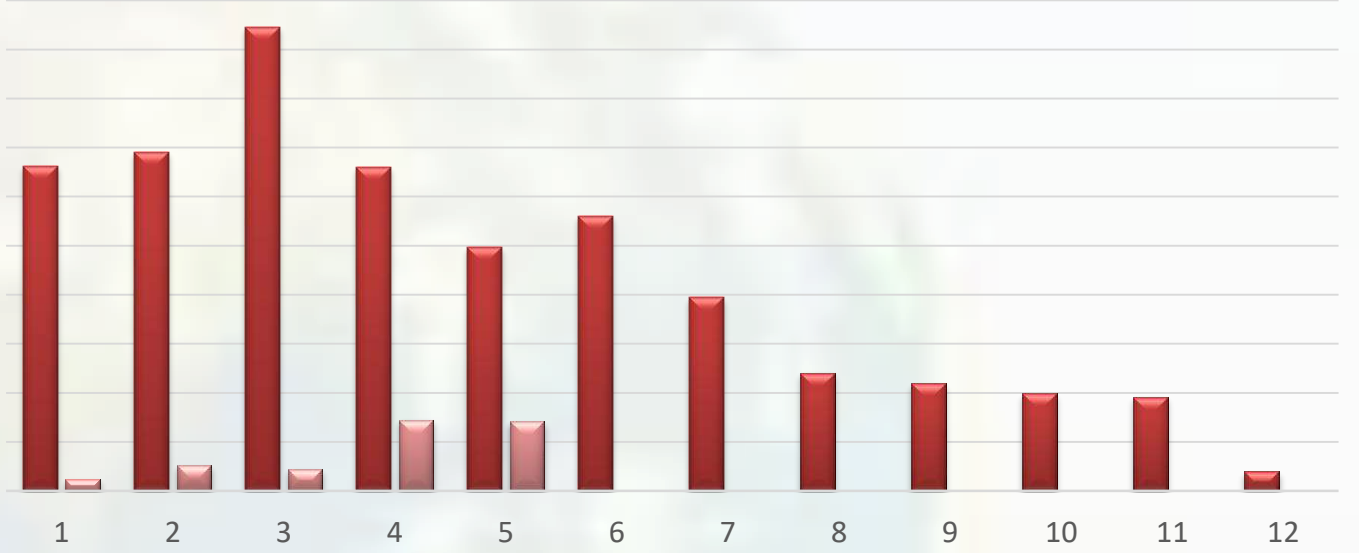




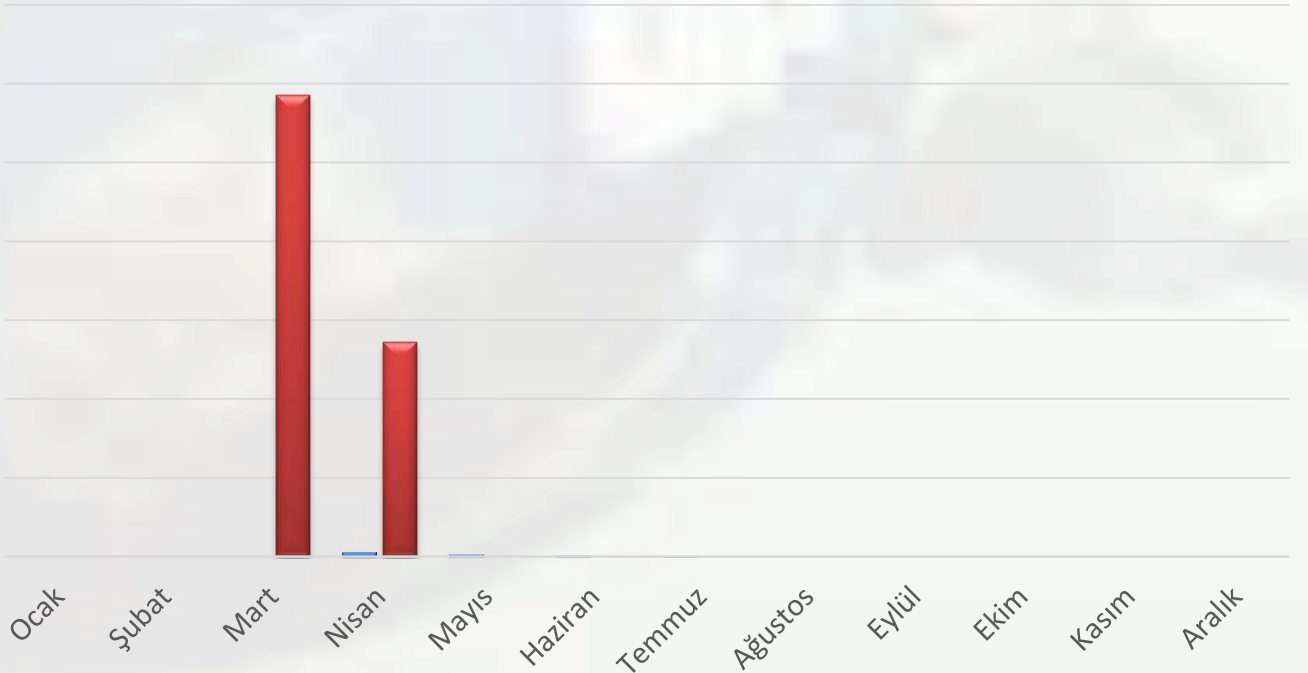


# WASA HOTEL ENERGY-SAVING

Electricity Consumption 2024-2025



Electricity Consumption Per Capita 2024-2025

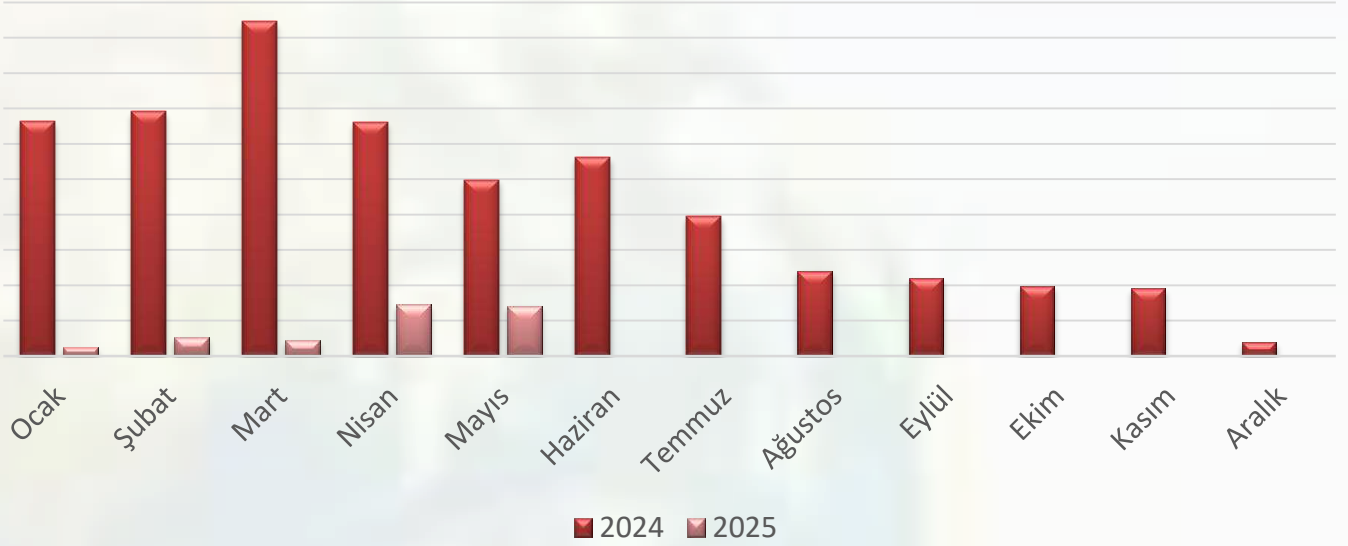


# MUZ HOTEL

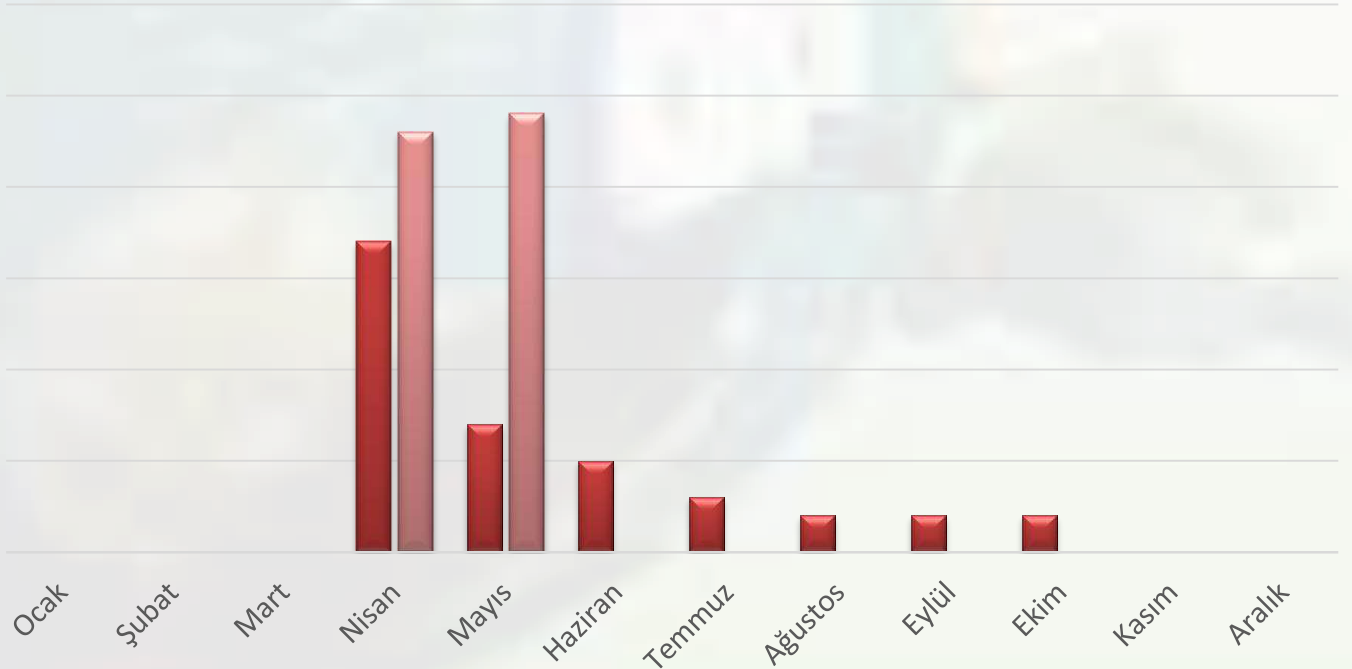
## ENERGY-SAVING



### Electricity Consumption 2024-2025



### Electricity Consumption Per Capita 2024-2025

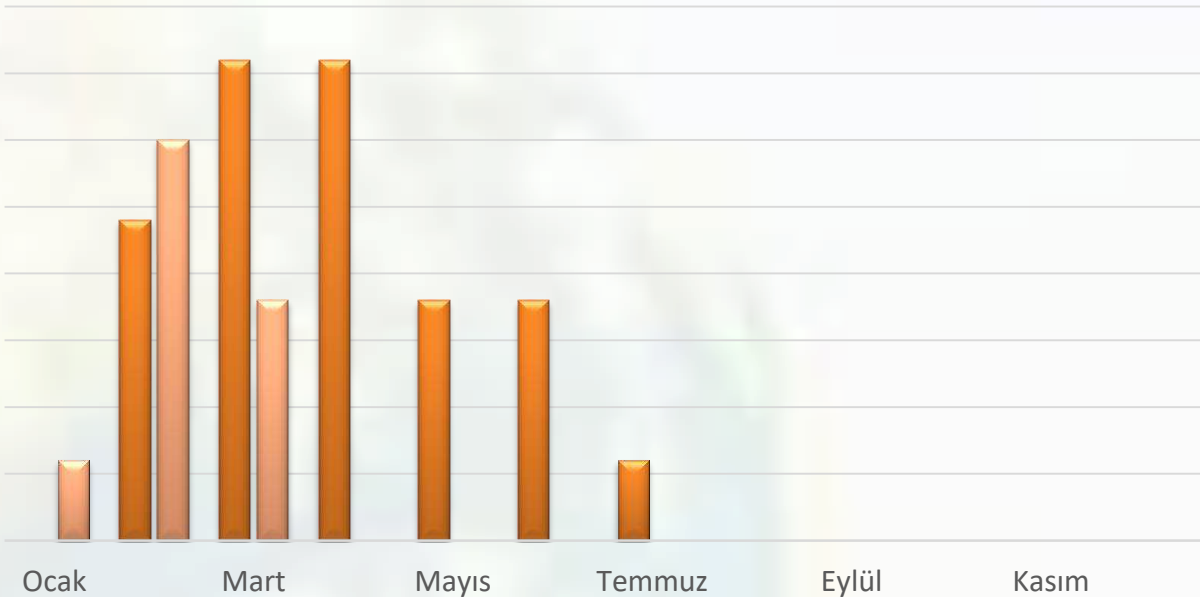




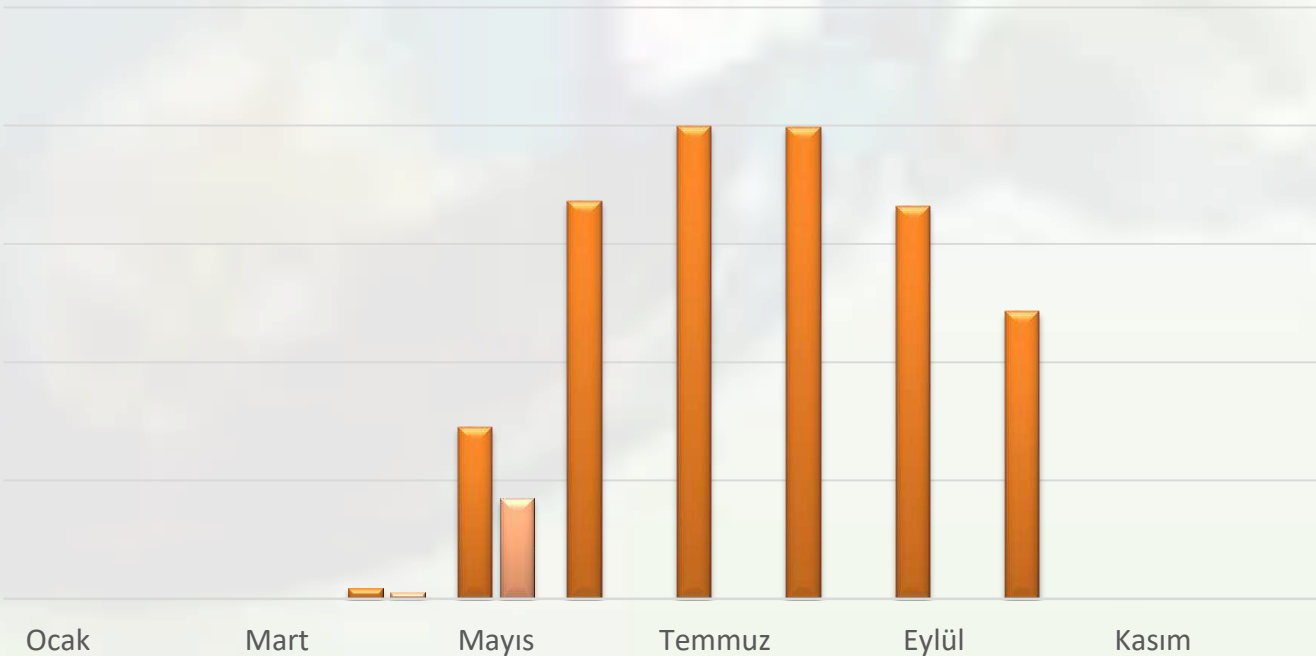
# WASA GROUP HOTEL

## ENERGY-SAVING

LPG Consumption Kg 2024-2025



LPG Per Capita Consumption 2024-2025



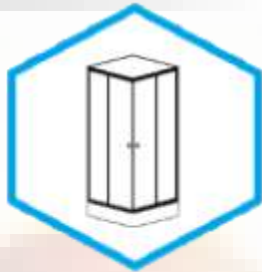
# WATER SAVING



There are water-saving aerators in all rooms and common areas.



All WCs use economical 6 and 3 litre dual flush systems.



By choosing shower cabins instead of bathtubs, water savings are achieved.



When watering our garden, water losses are prevented by using a sprinkler system.





# WATER SAVING



Our employees are trained on water conservation. Our guests are informed about our conservation practices.

Wastewater is connected to the sewer system in accordance with the discharge regulations.



There are warning signs for water saving on taps in all public areas.

There are warning signs for water saving on the taps in the production and personnel areas.

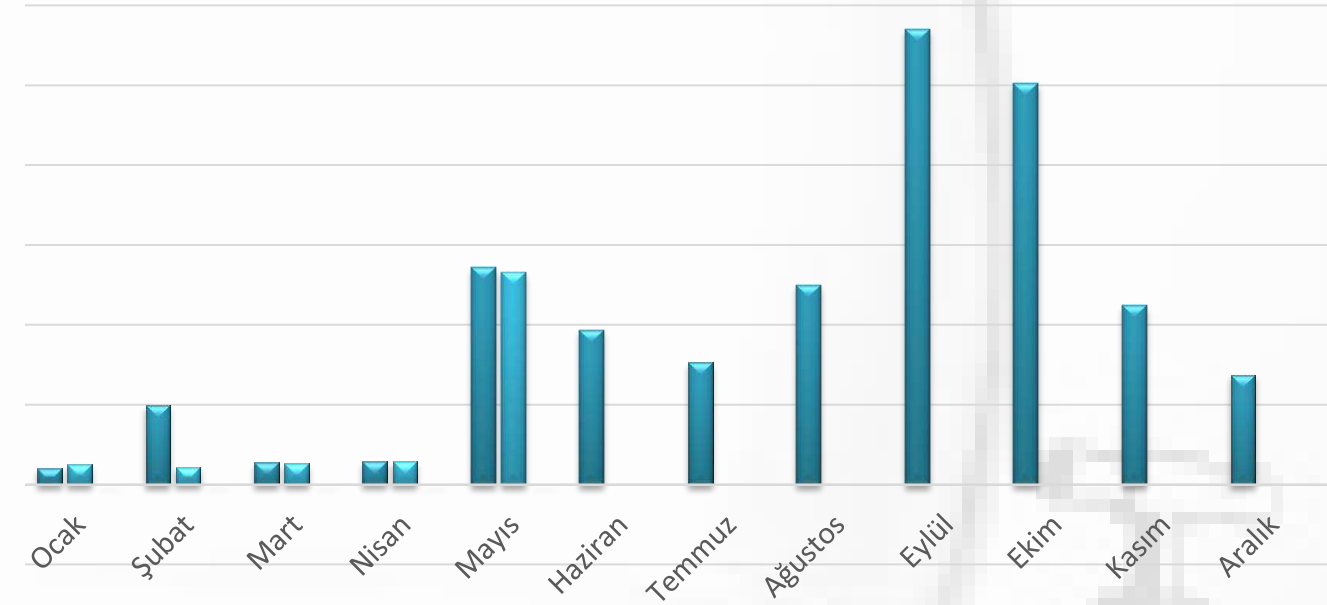


Our water consumption is monitored and recorded monthly and annually.

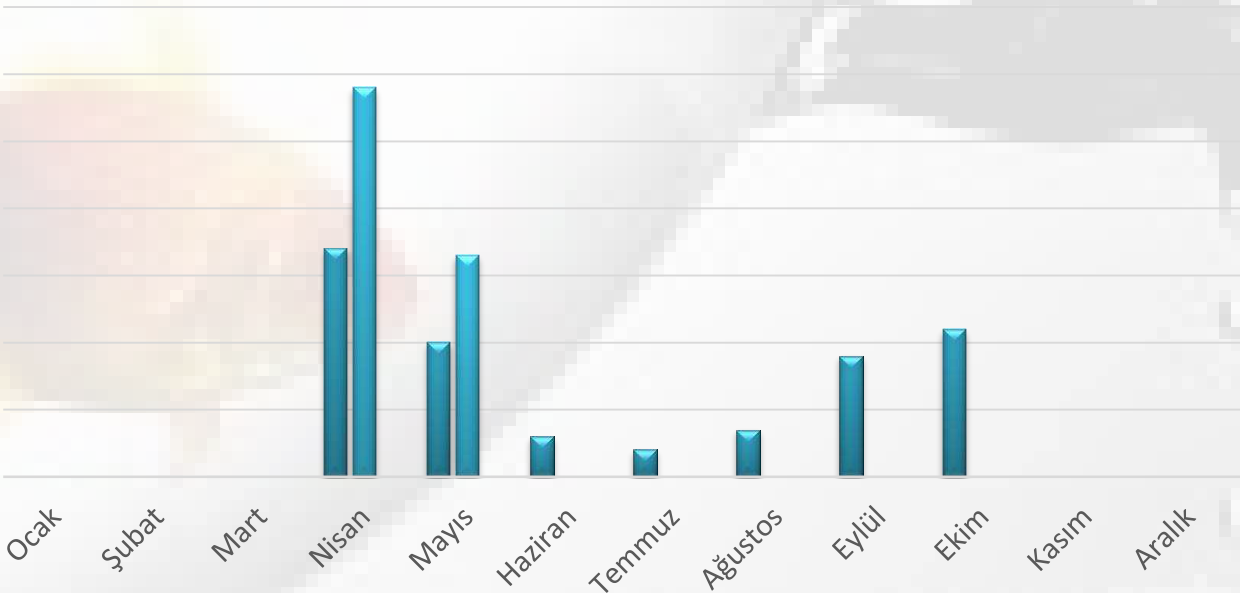
# CLUB WASA HOLIDAY VILLAGE

## WATER SAVING

Water Consumption Lt. 2024-2025



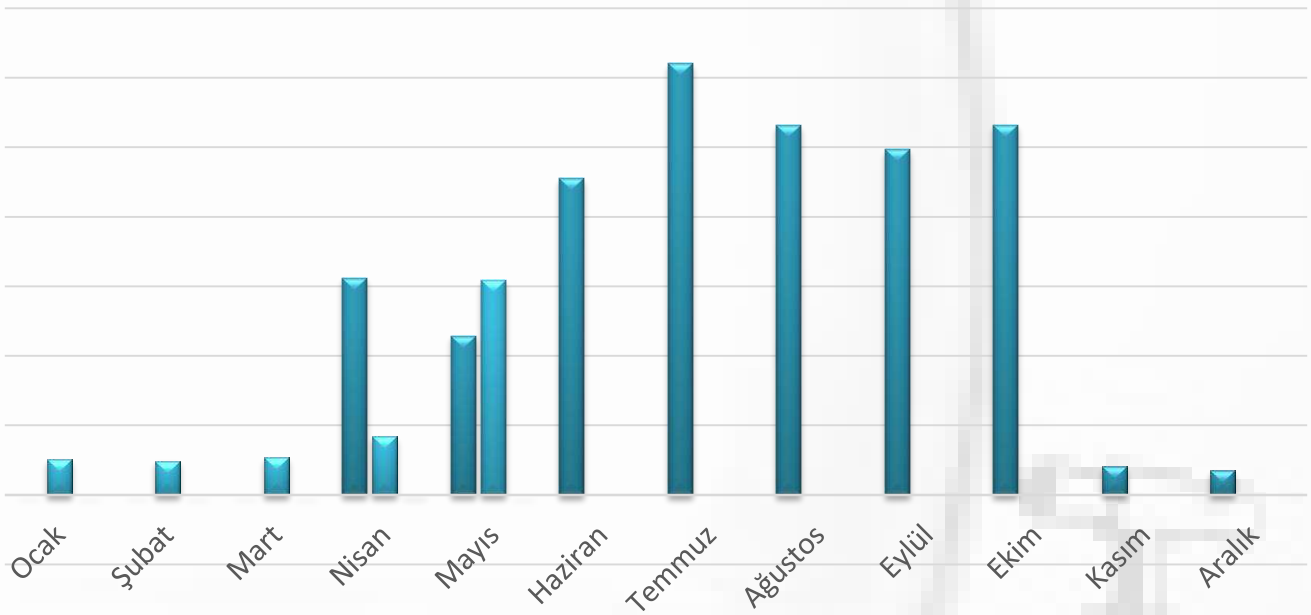
Water Consumption Per Capita 2024-2025



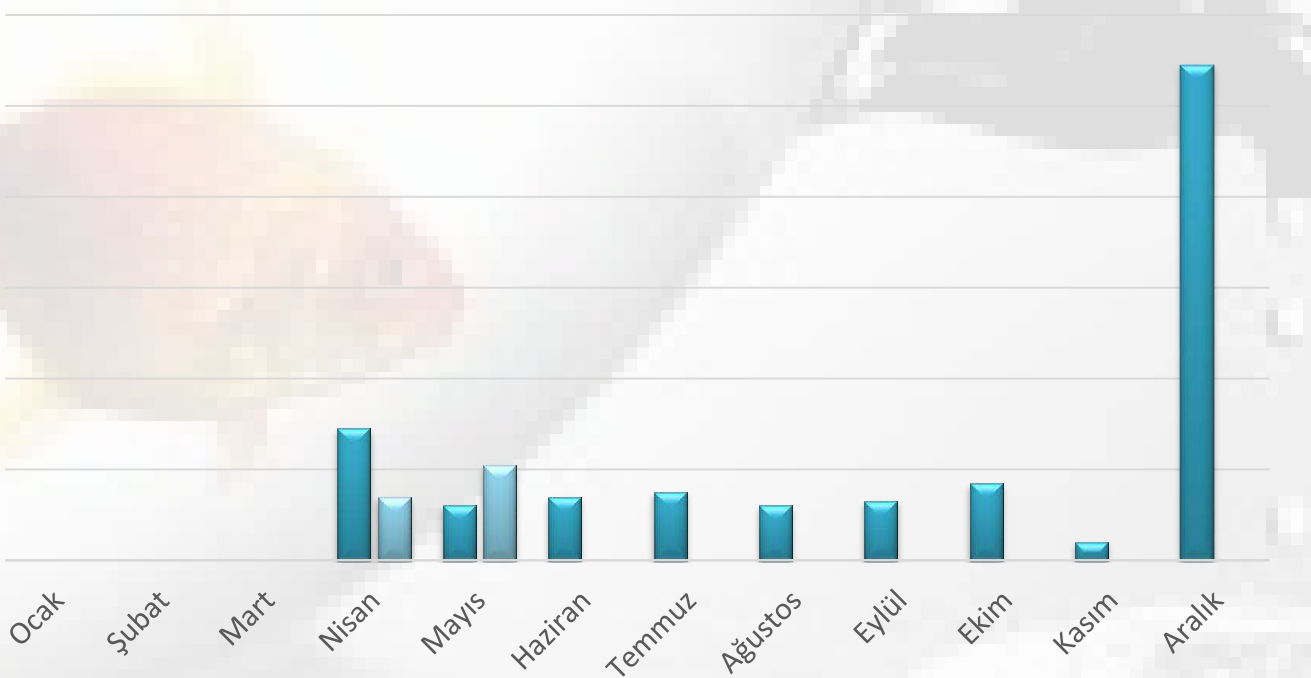
# WASA HOTEL

## WATER SAVING

Water Consumption Lt. 2024-2025



Water Consumption Per Capita 2024-2025

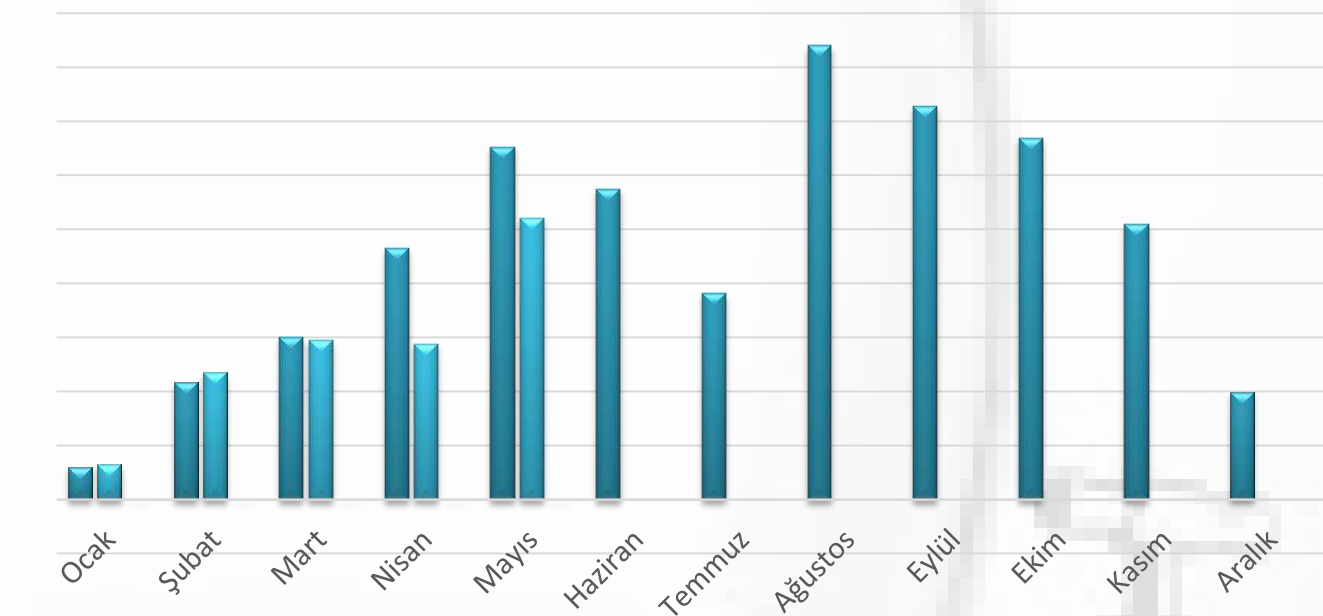




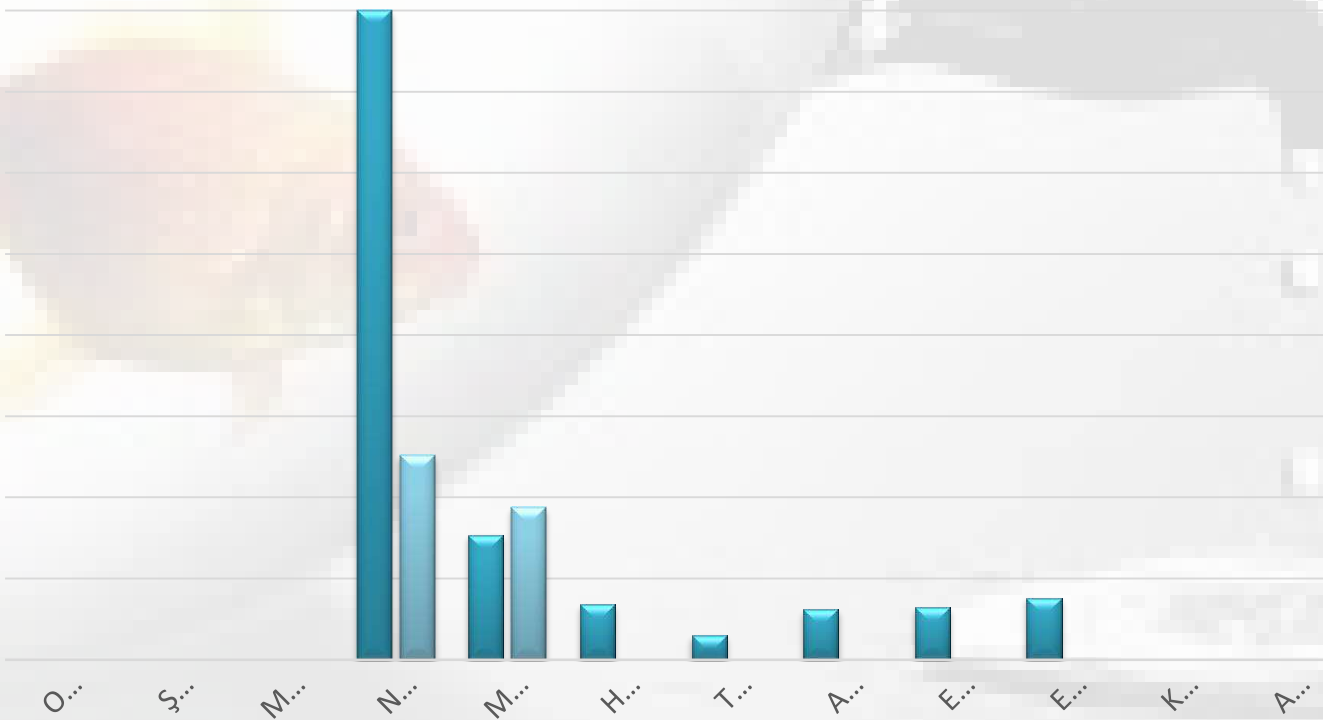
# MUZ HOTEL

## WATER SAVING

Water Consumption Lt. 2024-2025



Water Consumption Per Capita 2024-2025



# WASTE MANAGEMENT



We separate our waste at its source.



**NO PLASTIC**

We conserve our resources by using reusable materials instead of single-use materials.



To reduce paper consumption, we do our correspondence via e-mail and use double-sided papers.

We encourage our guests and employees to participate in recycling programs.

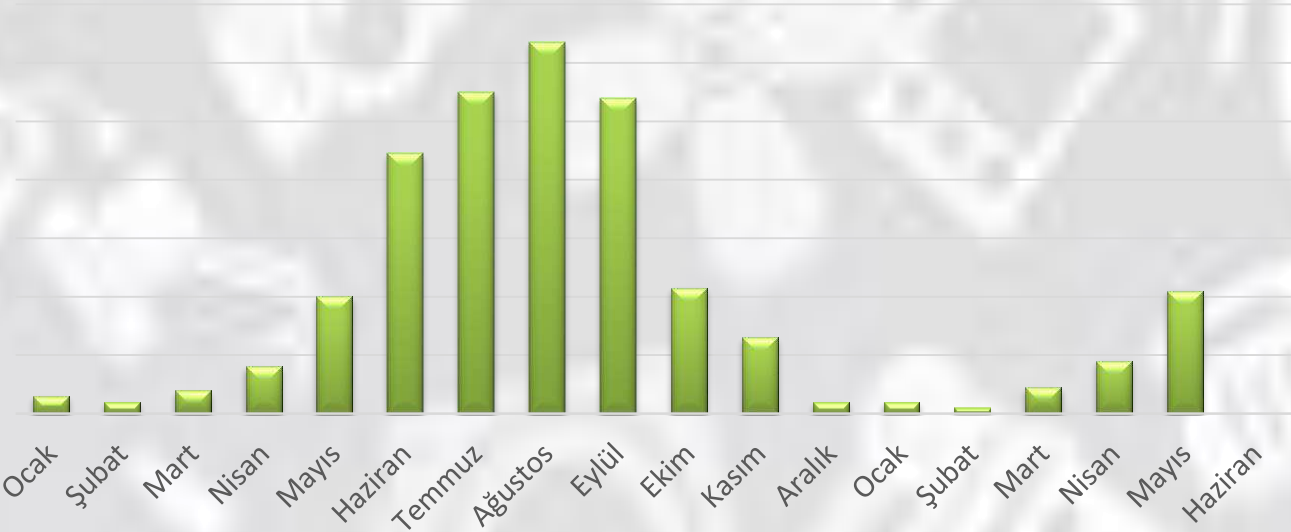


We reduce packaging waste by purchasing large packaged and concentrated products.

# CLUB WASA HOLIDAY VILLAGE

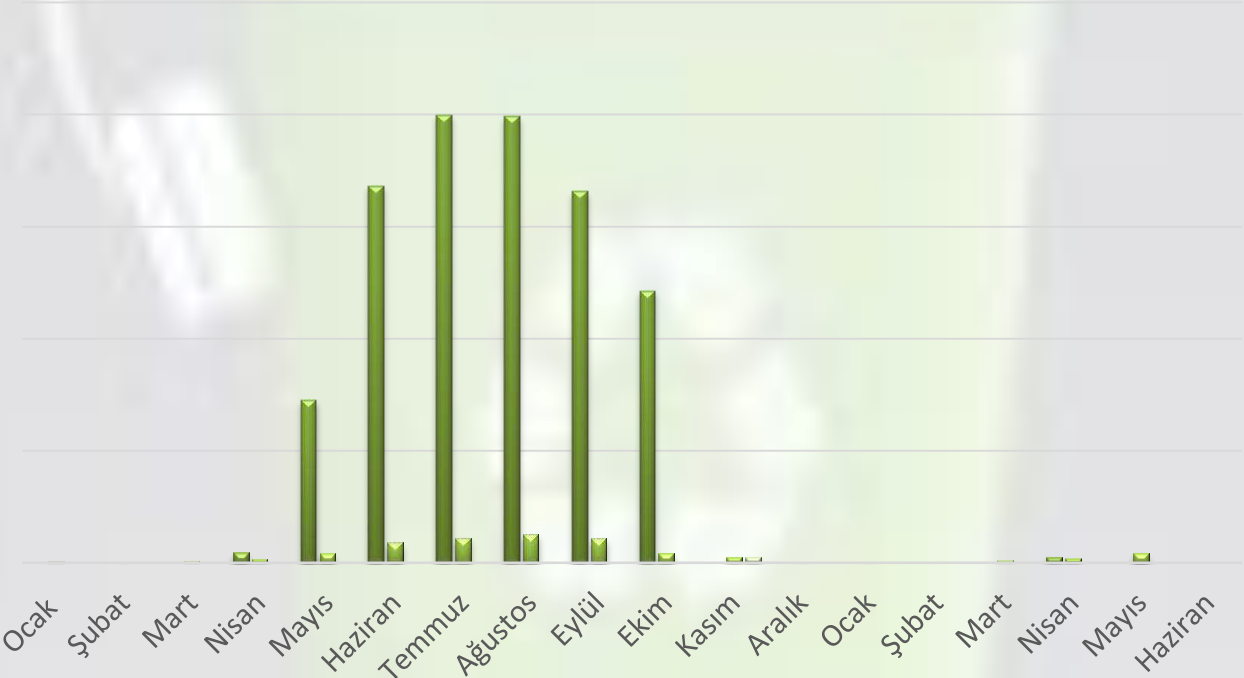
## WASTE MANAGEMENT

Solid Waste kg 2024-2025



In 2024, an average of 0.33 kg of solid waste per person was produced, including July.

Solid Waste Per Capita kg 2024-2025

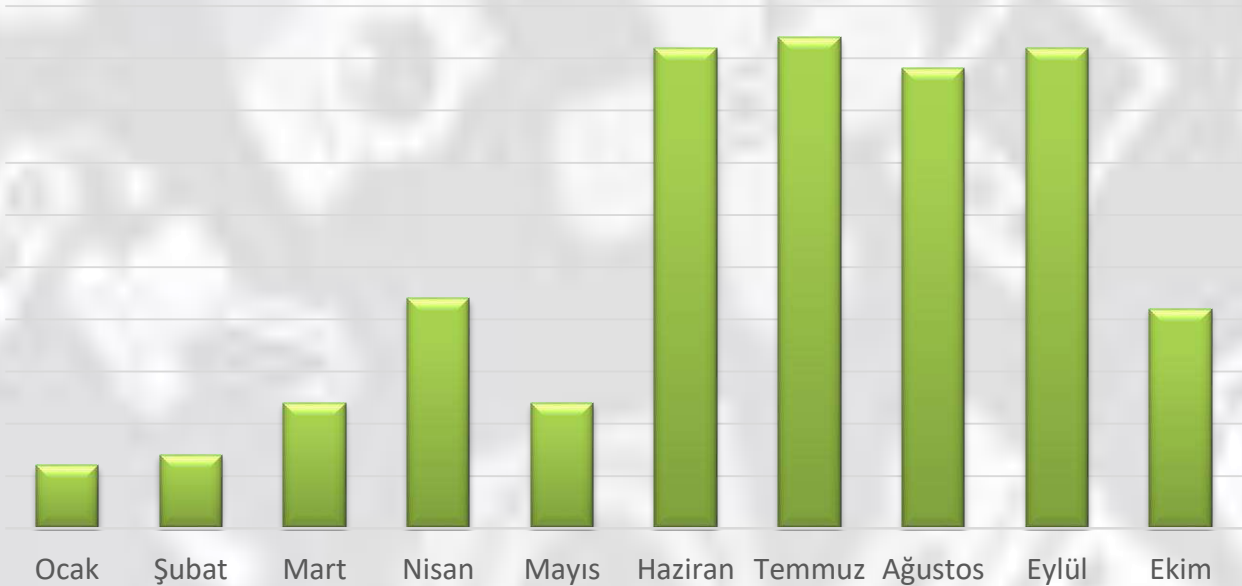




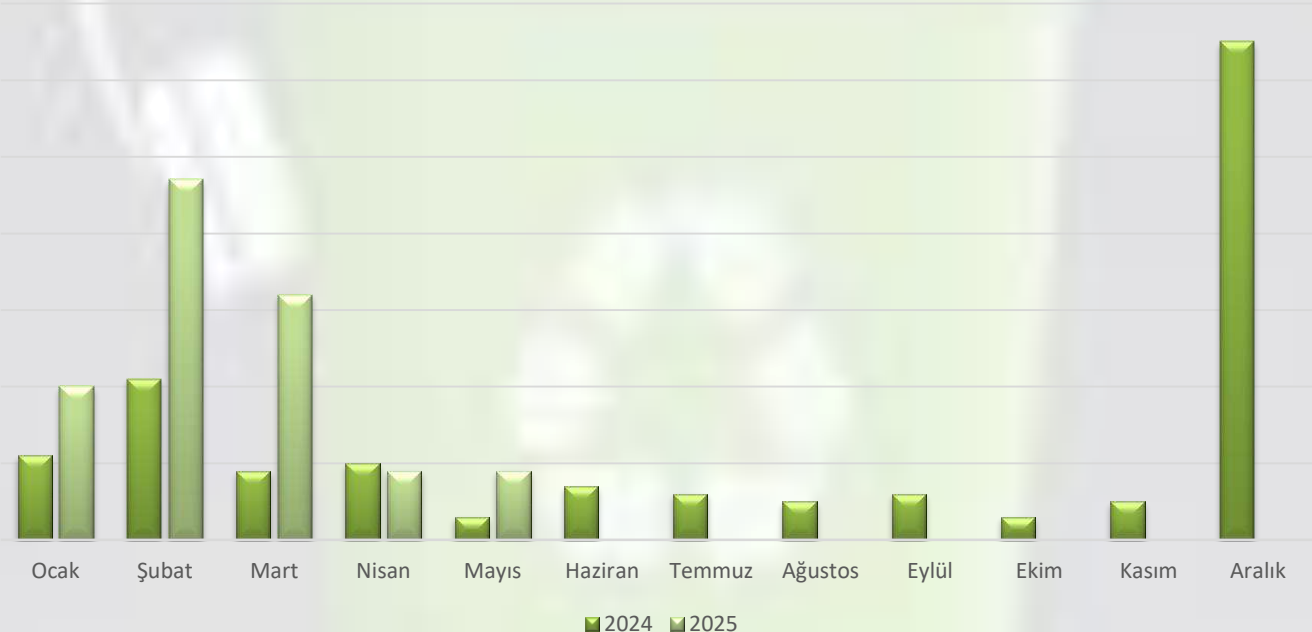
# WASA HOTEL

## WASTE MANAGEMENT

Solid Waste kg 2024-2025



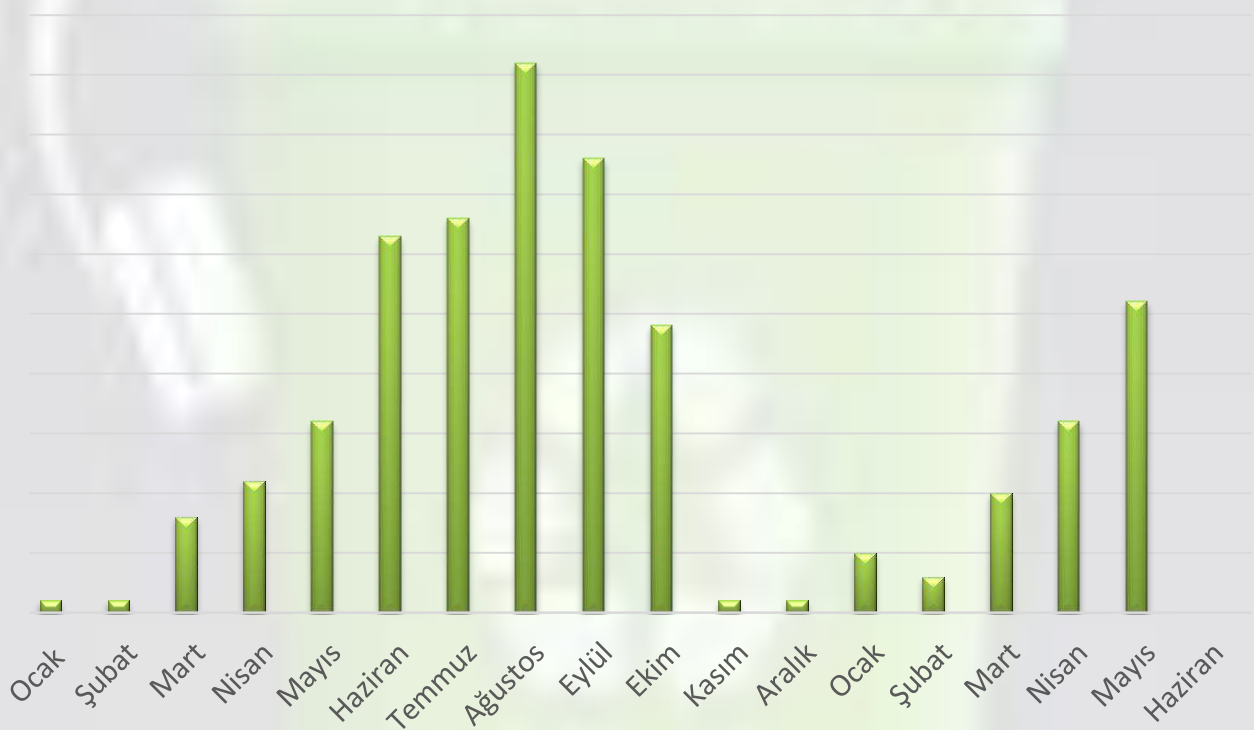
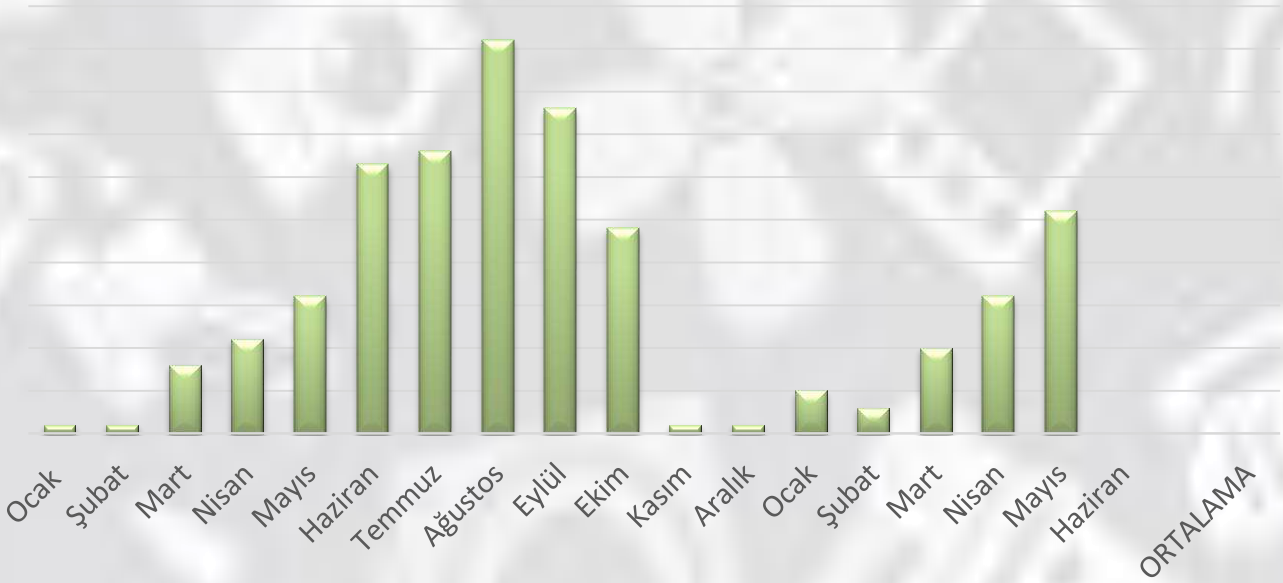
Solid Waste Per Capita kg 2024-2025



# MUZ HOTEL

## WASTE MANAGEMENT

Solid Waste kg 2024-2025



# SOCIAL RESPONSIBILITY



## GÖNÜLLÜ SERTİFİKASI



İnsanın yaşamı boyunca kişisel olarak tükettiği oksijeni üretmek için, 270 ağaç gerekmektedir. Kullandığı ağaç ürünleri ise ortalama 510 ağacın kesilmesine sebep olmaktadır. Her birey bu bilinç ve sorumluluk ile aldığı oksijeni, kullandığı ağaç ürünlerini kurtarmakla, yerine yenisini koyma çabasına girerse, daha yaşanabilir bir dünya olurdu.

Kıymetli gönüllümüz

(10 adet ağaç)

Club Waza Holiday Village

Ağaçlandırma Adına Çalışma Derneği'ne "GÖNÜLLÜ" olarak farkındalık ve duyarlılıkta bulunmaktasınız. Ülkemize, tüm canlılara ve dünyamıza sağlık, güzellik olsun. Vesile olan her adım için, saadet huzur ve esenlik içinde güzel günler temenni ederiz. Sizlerin doğaya ve tüm canlılar için gayret edeceğinize, daha güzel bir ülke, yaşanabilir bir dünya olması için mücadele edeceğinize inancımız tamdır. Güzel bir doğa, temiz bir nefes, gelecek nesiller için mutlu yarınlar dileriz. Ağaçlandırma Adına Çalışma Derneği.



AĞAÇ DERNEĞİ  
AĞAÇLANDIRMA ADINA ÇALIŞMA DERNEĞİ

Habip ŞANLI  
Ağaçlandırma Adına Çalışma Derneği  
Yönetim Kurulu Başkanı

14/06/2024



As WASA Hotel Group, we donate saplings every year.



# SOCIAL RESPONSIBILITY

## GÖNÜLLÜ SERTİFİKASI



Belge Sahibi

Sn. Ferit Türkteş

"Engelsiz yarınlar hep birlikte el ele" programımız kapsamında "GÖNÜLLÜ" olarak farkındalık ve duyarlılık yarattığınız için teşekkür ederiz.

Yönetim Kurulu Başkanı

ERHAN YILMAZ

Kurum Müdürü

ELİF DURSUN

**As WASA GROUP HOTELS, we provide support for barrier-free living.**

# SOCIAL RESPONSIBILITY



## TÜM AFRİKA'NIN DOSTLARI DERNEĞİ

*Sayın Ferit Türkteş*

Ramazan dolayısıyla gerçekleştirdiğiniz 1400 TL değerindeki *Kumanya Bağışı* Afrika'da ihtiyaç sahiplerine ulaştırıldı. Kilometrelerce uzakta iyilik bağı ile sofralara konuk olmanın tarifsiz mutluluğunu hep birlikte yaşıyoruz. Bu vesileyle TADD ailesi olarak Afrika'ya olan ilginiz için teşekkür ederiz.

**Dr. Bilgehan Güntekin**  
TADD Başkanı

**As WASA GROUP HOTELS, we support the Friends of  
All Africa Association.**

# SOCIAL RESPONSIBILITY

If you would like to contribute to our nature and endangered species, you can donate by scanning the QR codes.





# SUPPORT FOR NATURAL LIFE



**As WASA GROUP HOTELS, we provide support for natural life  
for the caretta caretta eggs we see on our beach.**

**22.07.2024**



# SUPPORT FOR THE ENVIRONMENT

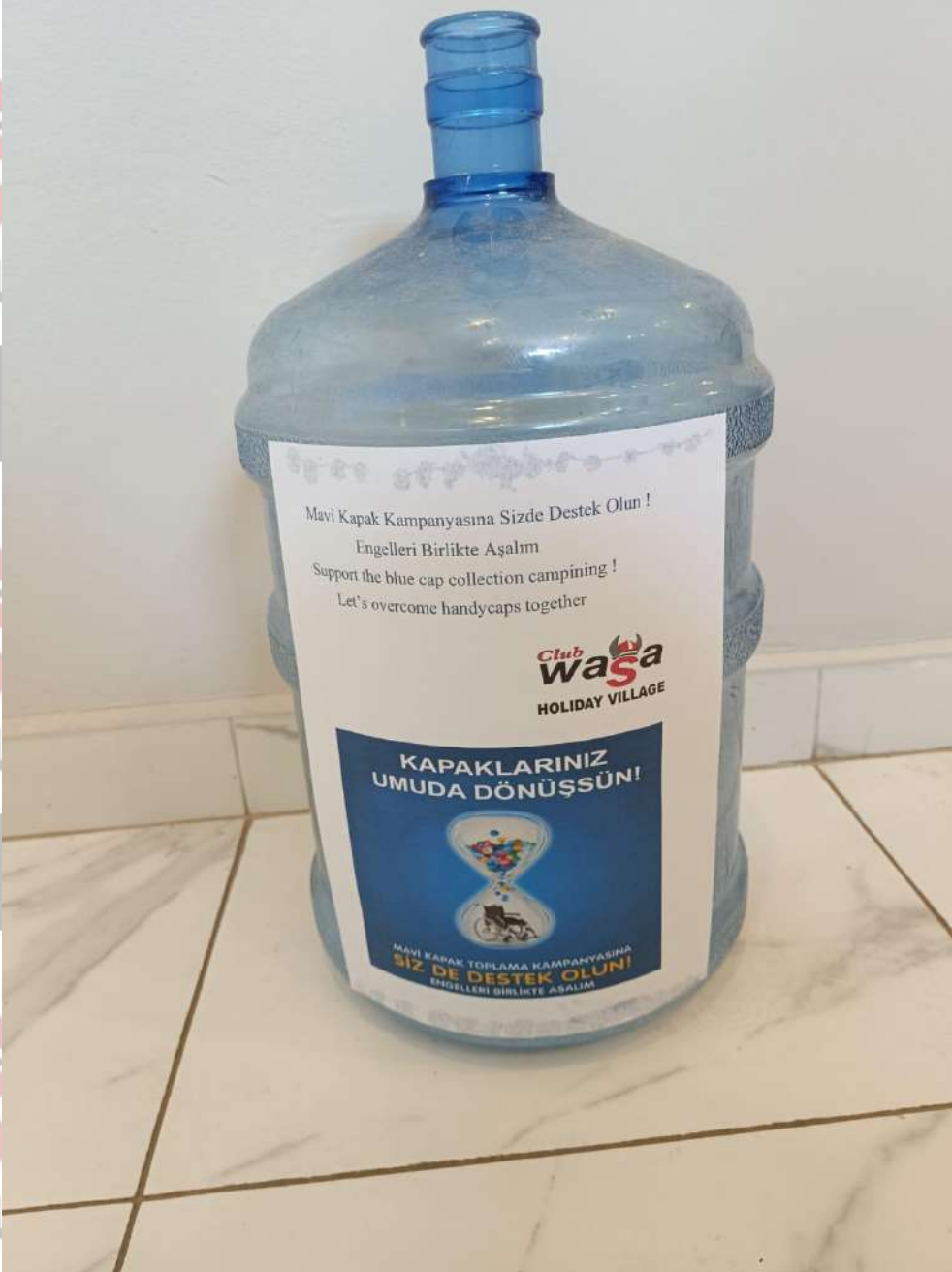


**On World Environment Day, we carried out a beach cleaning  
with our managers and staff.**

**05.06.2024**



# SUPPORT FOR BARRIER-FREE LIFE



**As WASA GROUP HOTELS, we support the Colorful Bottle Cap Collection Campaign.**



# OUR CERTIFICATES



TÜRKİYE CUMHURİYETİ  
ÇEVRE, ŞEHİRCİLİK VE  
İKLİM DEĞİŞİKLİĞİ BAKANLIĞI



SIFIR  
ATIK

T.C. ANTALYA VALİLİĞİ ÇEVRE,ŞEHİRCİLİK VE İKLİM DEĞİŞİKLİĞİ İL MÜDÜRLÜĞÜ

## SIFIR ATIK BELGESİ

(Temel Seviye)

Belge No: TS/7/B2/9/622 Tarih: 31/07/2023

**Adı:** TÜRKTaş OTELCİLİK KUYUMCULUK OTOMOTİV TURİZM VE TİCARET LİMİTED ŞİRKETİ-CLUB WASA  
HOLIDAY VILLAGE

**Adresi:** KONAKLI Mahallesi, MUSTAFA KEMAL BULVAR, No: 58 -, ALANYA, ANTALYA, Türkiye

**Vergi No:** 8810323754

**Türü:** Bina/Yerleşke

12/07/2019 tarihli ve 30829 sayılı Resmi Gazete'de yayımlanarak yürürlüğe giren Sıfır Atık Yönetmeliği'nce Sıfır Atık Yönetim Sistemi'ni kurarak **Sıfır Atık Belgesi**'ni almaya hak kazanmıştır.

**Tevfik ALTINAY**  
Çevre, Şehircilik ve İklim Değişikliği İl Müdürü

**E-İMZALIDIR**

Belge Son Geçerlilik Tarihi:  
31/07/2028

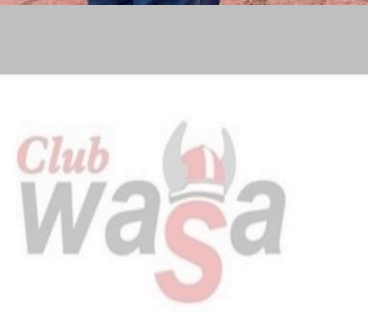
Bu belge, güvenli elektronik imza ile imzalanmıştır.

As WASA GROUP HOTELS, we have the Zero Waste Certificate.

# OUR TRAININGS



Club  
**Wasa**  
HOLIDAY VILLAGE



a  
**Wasa**  
HOLIDAY VILLAGE





# OUR TRAININGS





# OUR TRAININGS



# OUR CELEBRATIONS





# OUR ACTIVITIES



HOLIDAY VILLAGE



HOLIDAY VILLAGE



HOLIDAY VILLAGE



HOLIDAY VILLAGE



HOLIDAY VILLAGE



HOLIDAY VILLAGE



HOLIDAY VILLAGE



HOLIDAY VILLAGE

